

PRESENTATION

Monetizing Open Network APIs: Learning from API Success Stories

NOEL WIRZIUS

Telcos for Developers: Why we need to develop APIs together



Noel Wirzius

Product Manager Deutsche Telekom

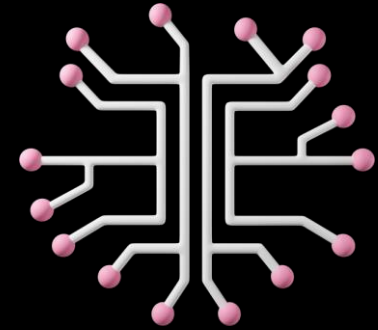
Telco Capabilities



Tarif Information



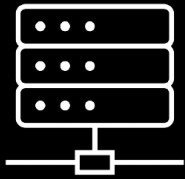
Sim-Card Information



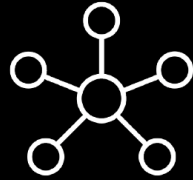
Network Information

Telcos hold a lot of data about devices and the network, and this information is being made available to developers via APIs. APIs are simple interfaces that provide access to extract and manage data.

Quality on Demand



Best EDGE/Server



QoD in the backbone

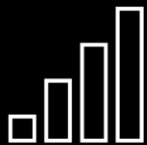


QoD in WIFI



QoD in the mobile network

Check Device



Connection Status



Connection Quality

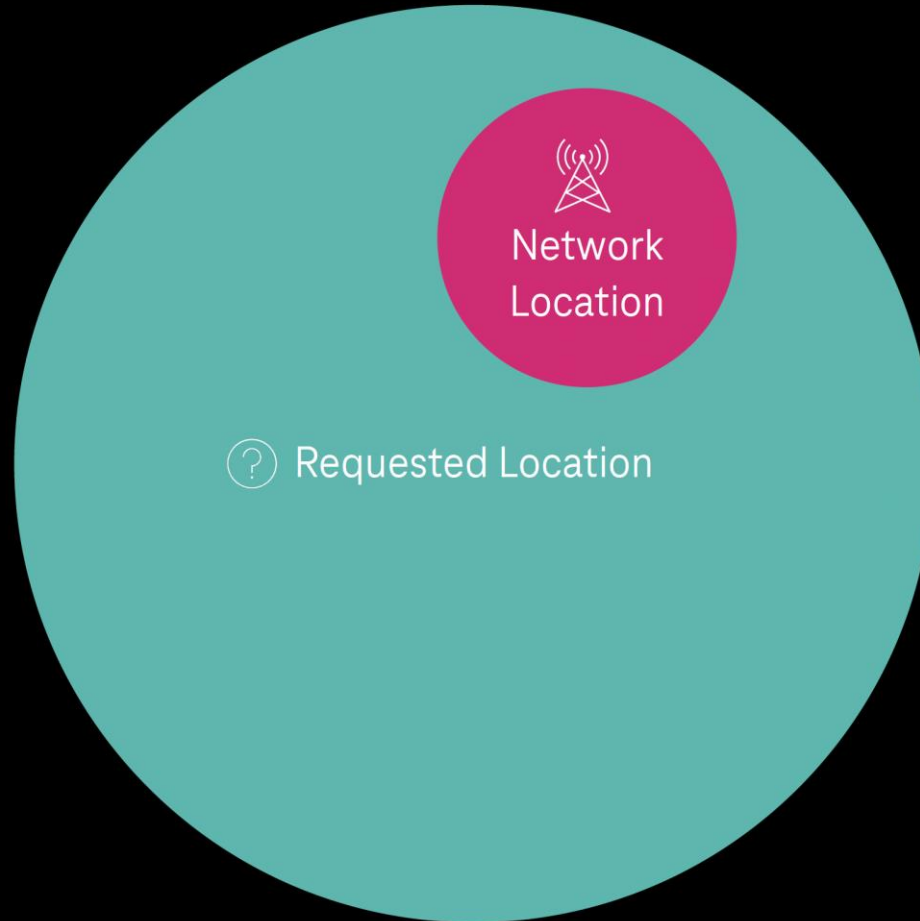


Prediction



Wake Up

Location Verify



Complex Telco World nobody will understand

AsSessionWithQoS API SCS/AS level GET Operation

GET `/scsAsId/subscriptions` read all of the active subscriptions for the SCS/AS

AsSessionWithQoS API Subscription level POST Operation

POST `/scsAsId/subscriptions` Creates a new subscription resource

AsSessionWithQoS API Subscription level GET Operation

GET `/scsAsId/subscriptions/{subscriptionId}` read an active subscriptions for the SCS/AS and the subscription Id

AsSessionWithQoS API subscription level PUT Operation

PUT `/scsAsId/subscriptions/{subscriptionId}` Updates/replaces an existing subscription resource

AsSessionWithQoS API subscription level PATCH Operation

PATCH `/scsAsId/subscriptions/{subscriptionId}` Updates/replaces an existing subscription resource

AsSessionWithQoS API Subscription level DELETE Operation

DELETE `/scsAsId/subscriptions/{subscriptionId}` Deletes an already existing subscription

```
"qosReference": "string",
"altQoSReferences": [
  "string"
],
"disUeNotif": true,
"ueIpv4Addr": "string",
"ipDomain": "string",
"ueIpv6Addr": "string",
"macAddr": "string",
"usageThreshold": "string",
"sponsorInfo": "string",
"qosMonInfo": {
  "reqQosMonParams": [
    "string"
  ],
  "repFreqs": [
    "string"
  ],
  "repThreshDl": "string",
  "repThreshUl": "string",
  "repThreshRp": "string",
  "waitTime": "string",
  "repPeriod": "string"
},
"localNotifInd": true,
"tscQosReq": {
  "reqGbrDl": "string",
  "reqGbrUl": "string",
  "reqMbrDl": "string",
  "reqMbrUl": "string",
  "maxTscBurstSize": "string",
  "req5Gsdelay": "string",
  "priority": "string",
```

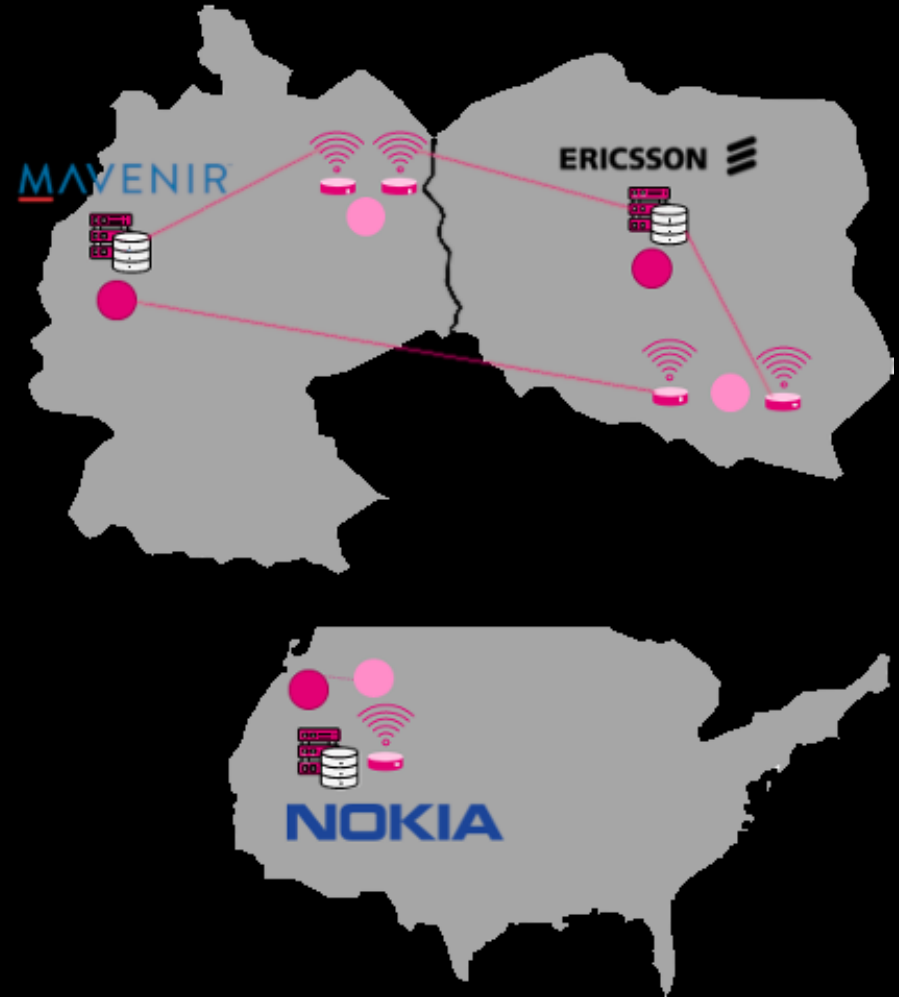

Our First Concept

QoS sessions		^
POST	/sessions Reserve resources for QoS session	✓ 🔒
GET	/sessions/{sessionId} Get session information	✓ 🔒
DELETE	/sessions/{sessionId} Free resources related to QoS session	✓ 🔒

```
{  
  "duration": 86400,  
  "ueAddr": "192.168.0.1",  
  "asAddr": "192.168.0.1",  
  "uePorts": "5010-5020,5021,5022",  
  "asPorts": "5010-5020,5021,5022",  
  "protocolIn": "TCP",  
  "protocolOut": "TCP",  
  "qos": "LOW_LATENCY",  
  "notificationUri": "https://application-server.com/notifications",  
  "notificationAuthToken": "c8974e592c2fa383d4a3960714"  
}
```

Labs

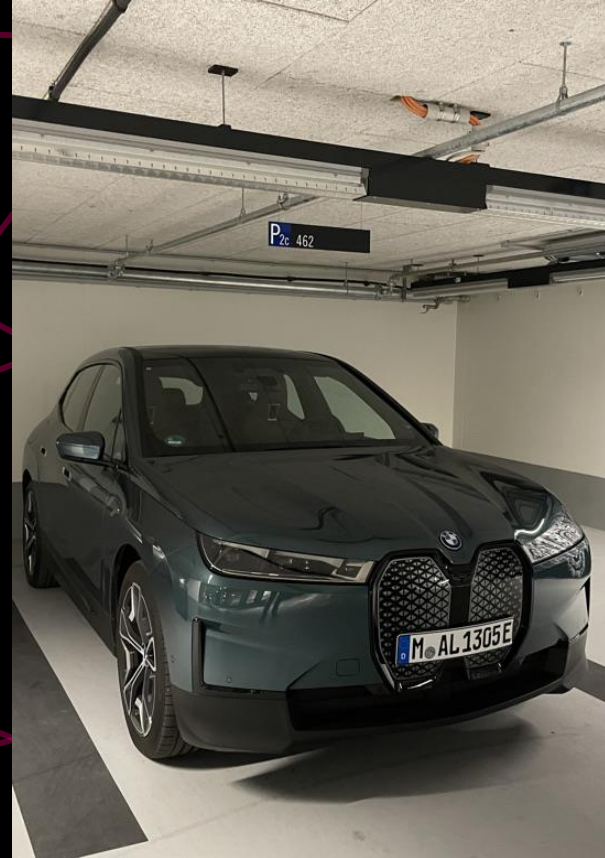
- **Deutsche Telekom and T Mobile PL and T Mobile US**
- **Builders of developer communities everywhere**
- **Provider of test beds**
- **Design & UX researchers**



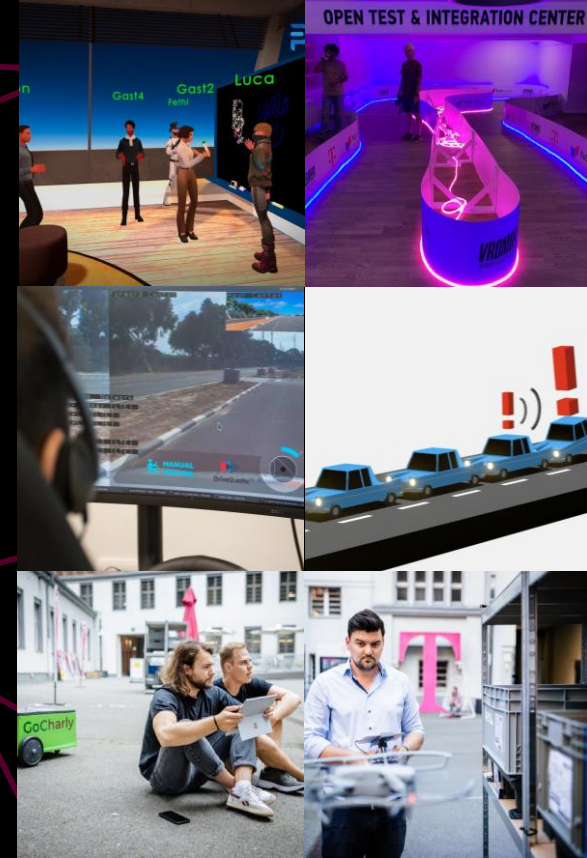
Massive teamwork allows us to be successful



Remote Maintenance



Automated Valet Parking



Early Access Programs



CAMARA

CAMARA

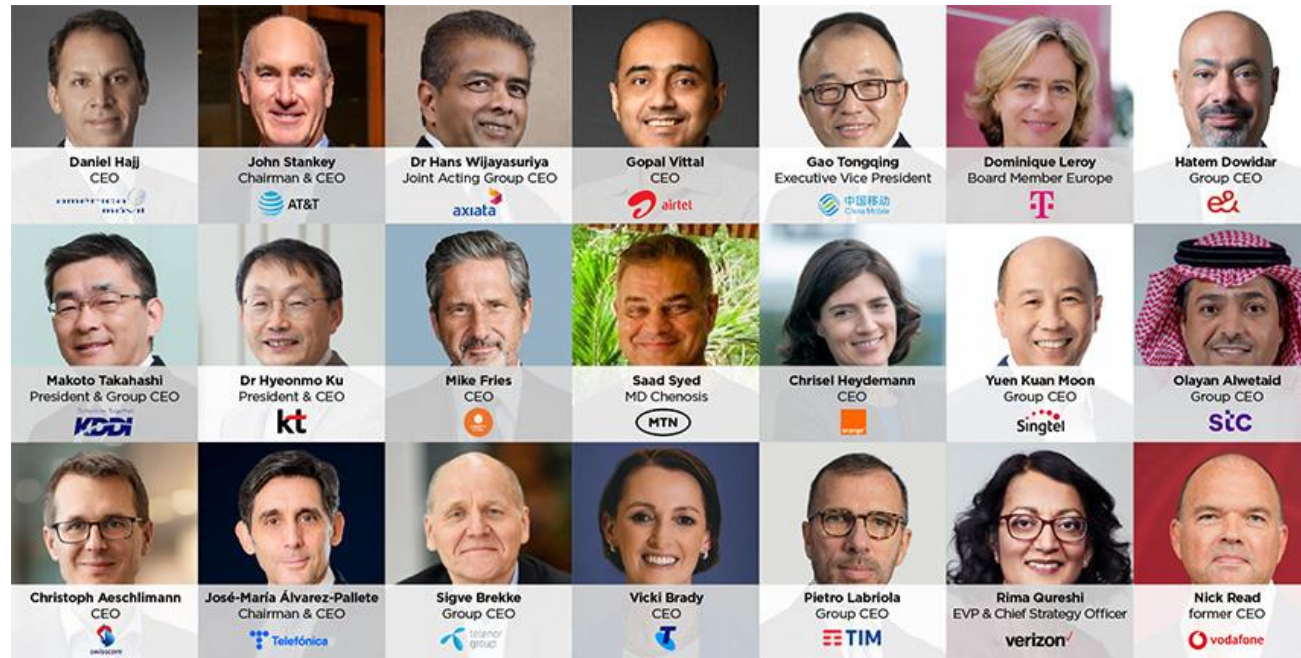
- 77 Named Partners
- 214 (+105) companies participating in CAMARA
- 130+ regular participants in Open Steering Calls
- 625 (+624) people joined CAMARA
- Development "home" for GSMA Open Gateway



Open Gateway

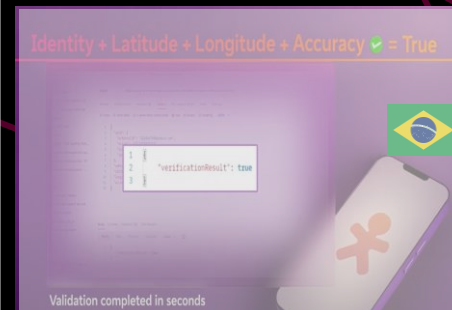
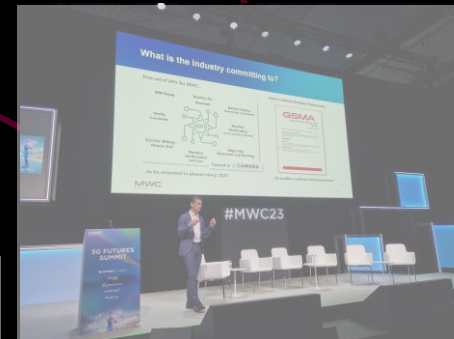
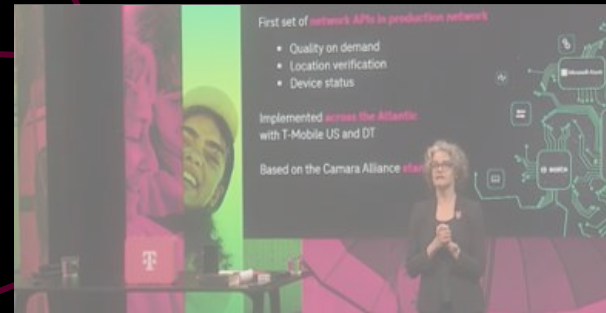
Open Gateway

- Based on CAMARA
- East/West
- Service Annex
- Aggregator
- 21 Telcos



But we are not alone

- **MWC Coverage of Network APIs**
 - **3,374 pieces of media coverage,**
 - **105 media outlets**
- **18 Operators showing Network APIs**
- **Every major telco even looking for Network API presentations**
- **All the big analyst firms writing report on Network APIs**



Telco Marketplace



Accelerate the development of immersive technologies and services such as industrial systems, fintech, identity, smart mobility, gaming and further Web 3.0 innovation

Developers /
Enterprise IT



MNO API
Gateways

Operator
Federation &
Interconnection



Aggregation



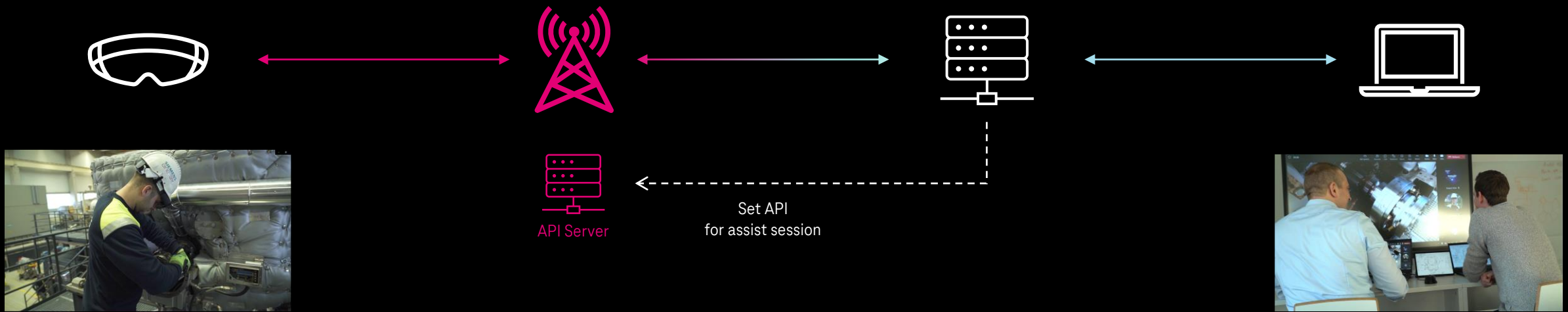
ORACLE



Qualcomm



Solution



A Siemens Energy field engineer is fixing a machine and requires real time technical assistance over mobile network



DT/TMUS network assigns the IP flow a higher priority to ensure better and steadier latency



Cloud application calls DT/TMUS API to request QoS on the mobile connection.
The remote assistant server receives high-quality pictures with low latency, significantly increasing service quality



Siemens Energy technical experts remotely assists the field engineer

Stay in Contact

Let's connect



Noel Wirzius – noel.wirzius@telekom.de

Product Manager Deutsche Telekom

