

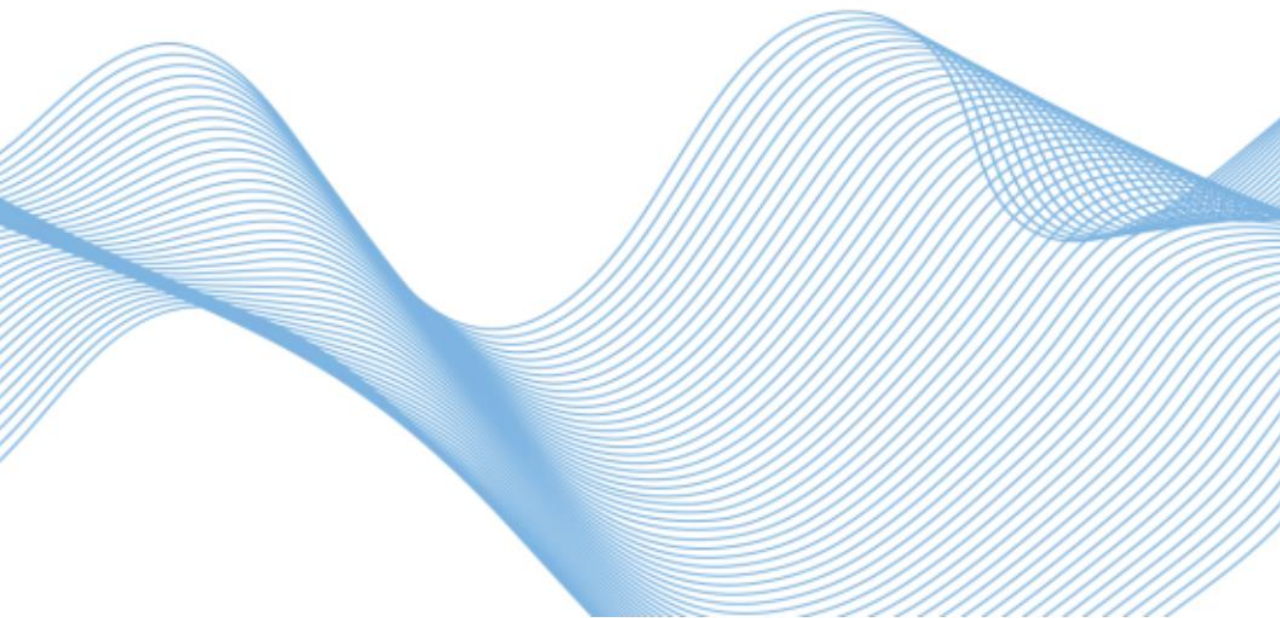


# Private 5G for Everyone!



[airpuls.de](https://airpuls.de)

# Our Mission



- **Customized** 5G enterprise networks for Industry 4.0, healthcare, agriculture, intralogistics, construction
- **Cost-effective** systems for 5G/6G development and testing
- **Open** solutions for 5G/6G development, training and research

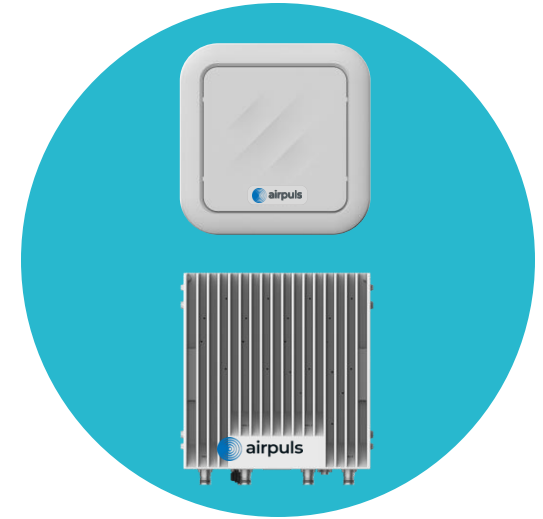
# Scalable Solutions



**All-in-one  
solutions**



**Modular O-RAN  
solutions for indoor and  
outdoor**



**5G+ software for cloud-  
native deployment**





**Learn more at  
airpuls.de**





# Meet airpuls at the Marketplace!

#SUMMIT25 · SEPTEMBER 2025



#SUMMIT25  
Implement & Consolidate



# airpuls Twin – Virtualized 5G Open RAN for RIC Innovation

## EASY DEPLOYMENT

Modern orchestration solutions for 5G E2E deployments in seconds. Based on Kubernetes and Helm Charts.

## INSPECT, EXPLORE, LEARN

Easy access to logs, configurations and traffic capture. Keep track of what is happening.

## EXTEND, DEVELOP, INNOVATE

Develop Open RAN solutions without the environment setup complexity. Experiment with our development Pods.







# airpuls Twin

Virtualized 5G Open RAN for RIC Innovation



[airpuls.de](https://airpuls.de)

# airpuls Twin

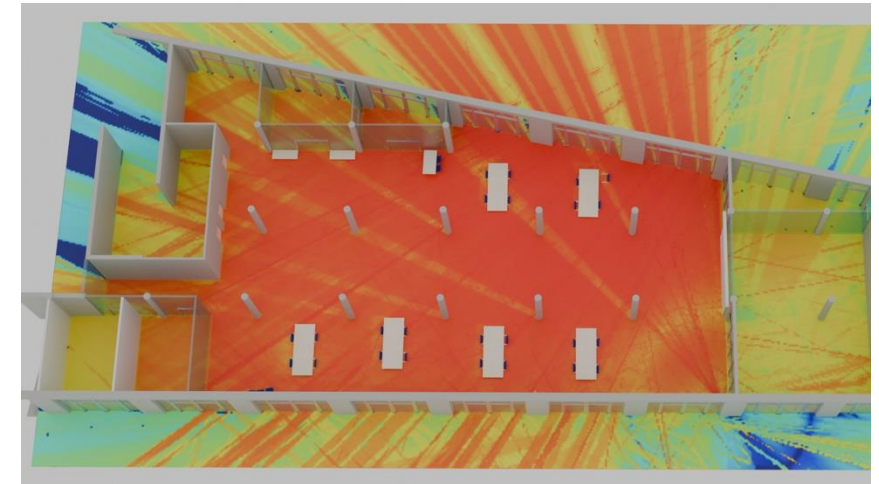
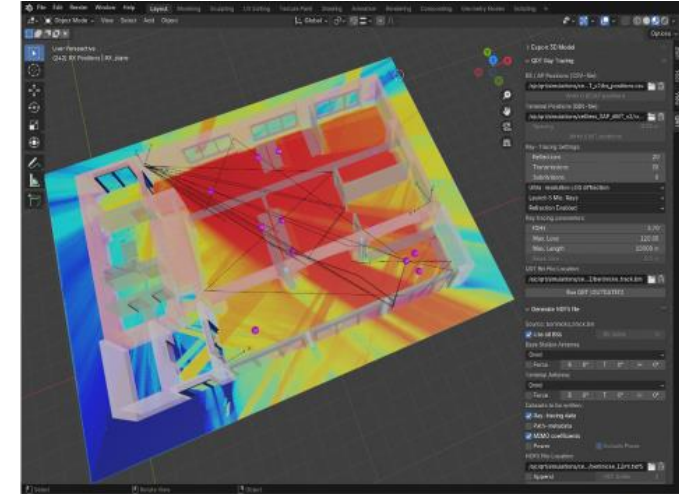
- A **flexible** solution to deploy digital twins using Kubernetes and cloud native tools.
- based on real 5G open ran functions mirroring, completely or partially, the configurations of your network.
- An ideal solution for development and integration tests of services, xApps/rApps.





# airpuls Twin and channel emulation

- By relaying on the airpuls Ray Tracing solution, our twin is able to emulate wireless channels from the real campus network environment.
- Estimations based on ray tracing simulations are injected in the DU in real-time.
- This opens up a myriad of possibilities when it comes to test and develop applications relying on channel estimates.



# airpuls Twin

## EASY DEPLOYMENT

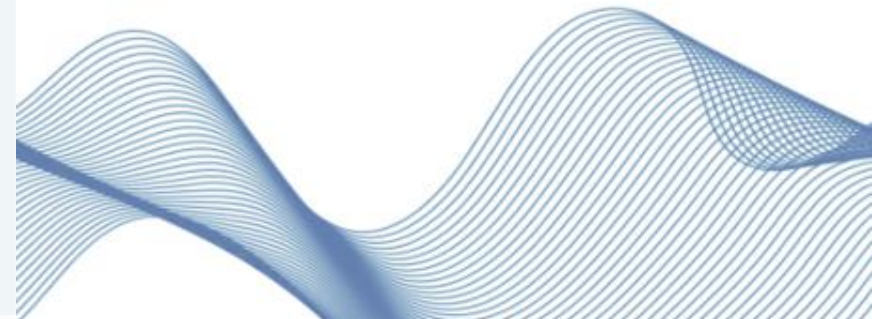
**Modern orchestration solutions for 5G E2E deployments in seconds. Based on Kubernetes and Helm Charts.**

## INSPECT, EXPLORE, LEARN

**Easy access to logs, configurations and traffic capture. Keep track of what is happening.**

## EXTEND, DEVELOP, INNOVATE

**Develop Open RAN solutions without the environment setup complexity. Experiment our development Pods.**



# airpuls Twin

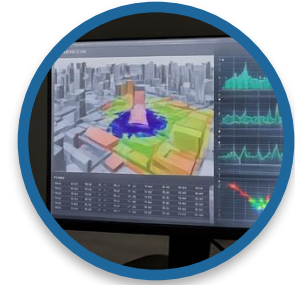
Our solution is ideal for a range of activities



Research and Prototyping



Training



Simulations



E2E and Integration Testing



Traffic Analysis



Error and Failure Analysis



# Our platform delivers...

30+

Functions available and  
expanding

5+

Extensively tested  
Blueprints

